



URL airomaps.nuim.ie/flexviewer/?config=POWCAR2011.xml%20

Quick facts

-  Company: All-Island Research Observatory
-  Sector: Public
-  Product / service: Website
-  Type of data: Employment and geospatial
-  Origin: Ireland





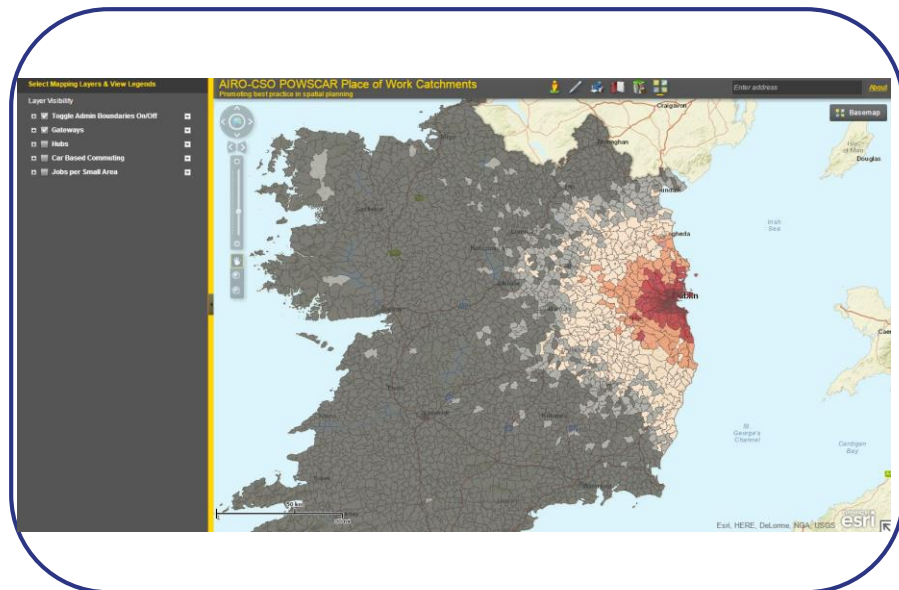
Benefits

-  Provides insights and maps the travel to work catchment.
-  Promotion and improvement of spatial planning.





How Open Data is used

-  They use geo-coded Open Data of the 2011 census on the the place of work, school or college from all Irish residents.
-  This data is subsequently mapped and can be combined with other layers such as gateways, administrative boundaries or number of jobs.



Other information

-  Is the result of a collaboration between the statistical office and the All-Island Research Observatory.
-  This organisation provides a suite of publicly available mapping and visualisations toolkits.

