

URL

<https://cutt.ly/HkwmscC>**Quick facts**

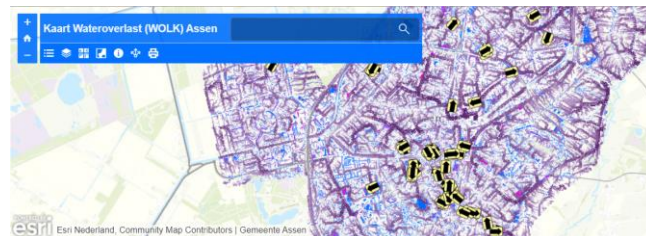
-  Company: Gemeente Assen
-  Sector: Environment
-  Product / service: Visualisation
-  Type of data: Meteorological data data
-  Origin: The Netherlands

**Description**

The Flooding Risk Map (Wateroverlastlandschapskaart: WOLK) provides an overview of drainage systems and areas at risk of flooding in the case of heavy precipitation. This can cause traffic jams and blockages, as well as water damage to buildings. WOLK helps prevent this by visualising the data on a map, where solutions are needed for the municipality of Assen.

Benefits

The Flooding Risk Maps enables users to design the public space in a way that takes flooding risk into account and facilitates the exchange of information between civil servants dealing with spatial planning, environmental, water and road management.

**How open data is used**

WOLK uses the data put forward by the municipality of Assen: assen.maps.arcgis.com and is part of the open data initiative: "Initiatief Open-Data groep".

