






URL

<https://failte-maps.ie/>

Quick facts

-  Company: Failte Maps
-  Sector: Regions & Cities
-  Product / service: Application
-  Type of data: Geospatial data
-  Origin: Ireland

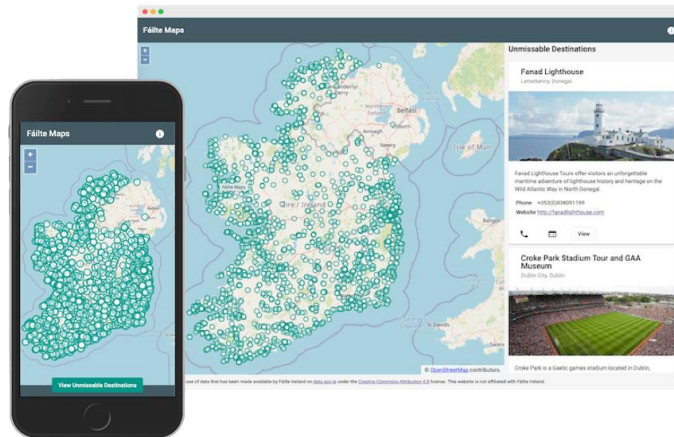


Description

Failte Maps is a product of the Irish National Tourism Development Authority and enables users to view sites relevant to tourist on a map of the area. Those sites include famous historical landmarks, tourist attractions and activities, currently available accommodation, and transportation related sites such as car rentals and taxi services.

Benefits

Failte Maps is an easy-to-use and clear map that combines a wealth of information in one location as an overview. In addition, the application make it possible for users to share attraction information such as contact details for example.



How open data is used

Failte Maps obtains the geospatial information through Open Street Maps supplemented with an OpenLayers package for the map of Ireland specifically. The information of the specific sites is pulled from the Irish Open Data Portal (data.gov.ie).

