






URL <https://en.unesco.org/covid19/educationresponse>

### Quick facts

 Company:	UNESCO
 Sector:	Education
 Product / service:	Website
 Type of data:	Educational data
 Origin:	Global

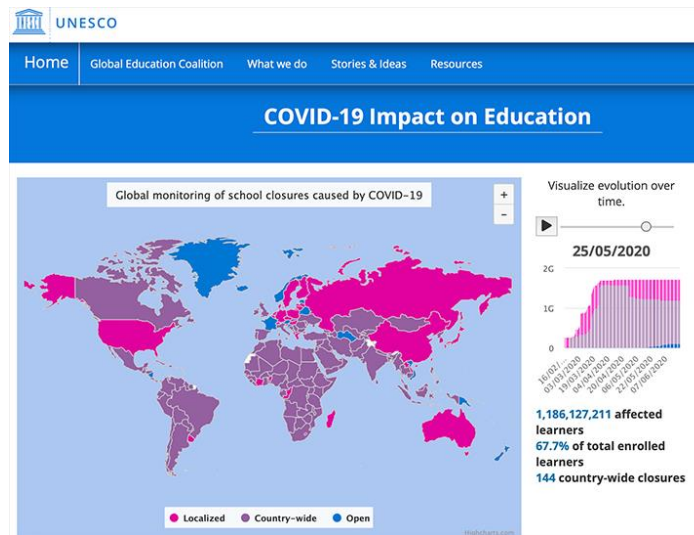


### Description

The United Nations Educational, Scientific and Cultural Organisation (UNESCO) monitors the policy responses that are deployed to combat COVID-19 and their impact, such as school closures. Since February 2020, they created an interactive dashboard that visualises the evolution over time in terms of number of affected learners, affected learners as percentage of the total and number of nationwide school closures.

### Benefits

This dashboard visualised the global impact of school closures. In addition, It helps UNESCO with supporting countries in their efforts to mitigate the immediate impact of school closures, particularly for more vulnerable and disadvantaged communities, and to facilitate the continuity of education for all through remote learning.



### How open data is used

The data is openly available and is updated on a weekly basis. The data is retrieved from the UNESCO Institute for Statistics data.

